

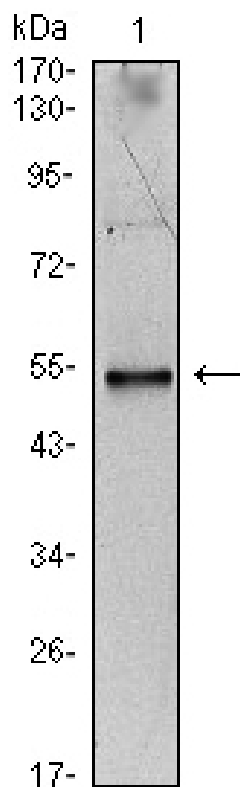


# IL-34 Monoclonal Antibody

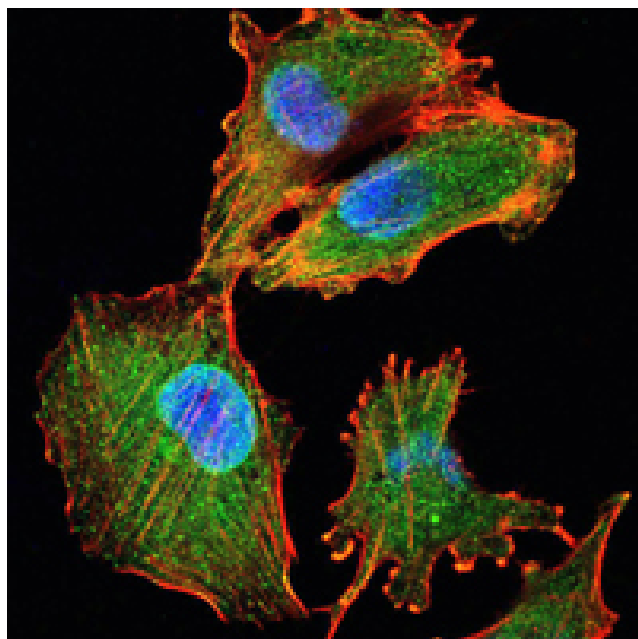
<b>Catalog No</b>	YP-Ab-15844
<b>Isotype</b>	IgG
<b>Reactivity</b>	Human
<b>Applications</b>	WB;IF;FCM;ELISA
<b>Gene Name</b>	IL34
<b>Protein Name</b>	Interleukin-34
<b>Immunogen</b>	Purified recombinant fragment of human IL-34 expressed in E. Coli.
<b>Specificity</b>	IL-34 Monoclonal Antibody detects endogenous levels of IL-34 protein.
<b>Formulation</b>	Ascitic fluid containing 0.03% sodium azide, 0.5% BSA, 50% glycerol.
<b>Source</b>	Monoclonal, Mouse
<b>Purification</b>	Affinity purification
<b>Dilution</b>	Western Blot: 1/500 - 1/2000. Immunofluorescence: 1/200 - 1/1000. Flow cytometry: 1/200 - 1/400. ELISA: 1/10000. Not yet tested in other applications.
<b>Concentration</b>	1 mg/ml
<b>Purity</b>	≥90%
<b>Storage Stability</b>	-20°C/1 year
<b>Synonyms</b>	IL34; C16orf77; Interleukin-34; IL-34
<b>Observed Band</b>	
<b>Cell Pathway</b>	Secreted .
<b>Tissue Specificity</b>	Detected in the sinusoidal epithelium in the red pulp of spleen (at protein level). Predominantly expressed in spleen. Also detected in a range of other tissues including heart, brain, lung, liver, kidney, thymus, testis, ovary, small intestine, prostate and colon.
<b>Function</b>	function: Cytokine that promotes the differentiation and viability of monocytes and macrophages. Stimulates phosphorylation of MAPK1/ERK2 AND MAPK3/ERK1. Ligand for colony-stimulating factor-1 receptor CSF1R., similarity: Belongs to the IL-34 family., subunit: Homodimer., tissue specificity: Detected in the sinusoidal epithelium in the red pulp of spleen (at protein level). Predominantly expressed in spleen. Also detected in a range of other tissues including heart, brain, lung, liver, kidney, thymus, testis, ovary, small intestine, prostate and colon.,
<b>Background</b>	Interleukin-34 is a cytokine that promotes the differentiation and viability of monocytes and macrophages through the colony-stimulating factor-1 receptor (CSF1R; MIM 164770) (Lin et al., 2008 [PubMed 18467591]). [supplied by OMIM, May 2008],
<b>matters needing attention</b>	Avoid repeated freezing and thawing!

**Usage suggestions**

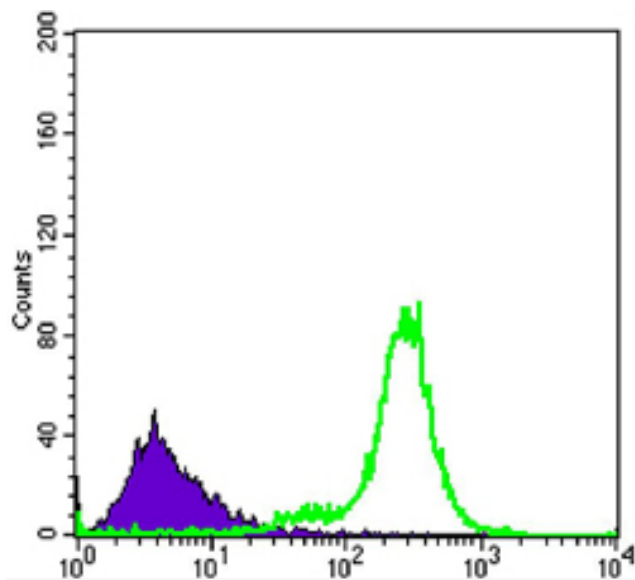
This product can be used in immunological reaction related experiments. For more information, please consult technical personnel.

**Products Images**

Western Blot analysis using IL-34 Monoclonal Antibody against IL-34-hlgGfc transfected HEK293 cell lysate.



Immunofluorescence analysis of U251 cells using IL-34 Monoclonal Antibody (green). Blue: DRAQ5 fluorescent DNA dye. Red: Actin filaments have been labeled with Alexa Fluor-555 phalloidin.



Flow cytometric analysis of K562 cells using IL-34 Monoclonal Antibody (green) and negative control (purple).